

METTL3 Rabbit mAb Recombinant

Basic Information

Catalot No. : Gab202204

Observed MW : 80kDa

Calculated MW : 25kDa/64kDa

Category : Primary antibody

Applications : WB,IF

Cross-Reactivity : Human, Mouse

Recommended Dilutions

WB 1:500 - 1:2000

IF 1:50 - 1:200

Immunogen Information

Gene ID : 56339 **Swiss Prot** : Q86U44

Immunogen : A synthesized peptide derived from human METTL3

Synonyms : IME4; M6A; MT-A70; Spo8; hMETTL3; METTL3

Background

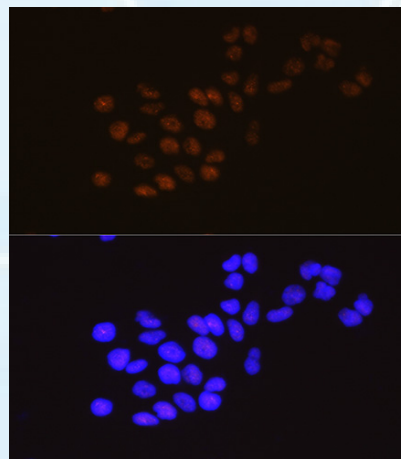
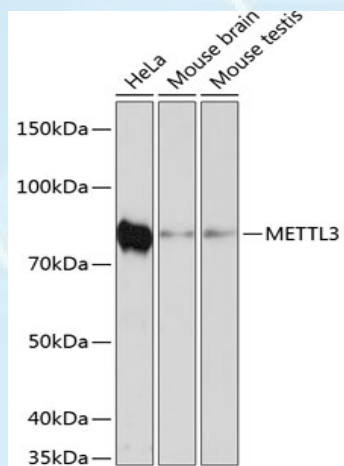
This gene encodes the 70 kDa subunit of MT-A which is part of N6-adenosine methyltransferase. This enzyme is involved in the posttranscriptional methylation of internal adenosine residues in eukaryotic mRNAs, forming N6-methyladenosine. [provided by Ref Seq, Jul 2008]

订购电话 : 021-55089063

网址 : www.genelily.com

技术支持 : service@genelily.com

Validation Data



Western blot analysis of extracts of various cell lines, using METTL3 antibody (Gab202204) at 1000 dilution.

Secondary antibody : HRP Goat Anti-Rabbit IgG (H+L) at 1:10000 dilution.

Lysates/proteins : 25ug per lane.

Blocking buffer : 3% nonfat dry milk in TBST.

Detection : ECL Enhanced Kit .

Exposure time : 3min.

Immunofluorescence analysis of HeLa cells using METTL3 Rabbit mAb (Gab202204) at dilution of 1:100 (40x lens).

Blue : DAPI for nuclear staining.

Product Information

Source

Rabbit

Isotype

IgG

Purification

Affinity purification

Storage

Store at -20 . Avoid freeze / thaw cycles.

Buffer : PBS with 0.02% sodium azide, 0.05% BSA, 50% glycerol, pH7.3.

* For research use only. Not for therapeutic or diagnostic purposes.

订购电话: 021-55089063

网址: www.genelily.com

技术支持: service@genelily.com